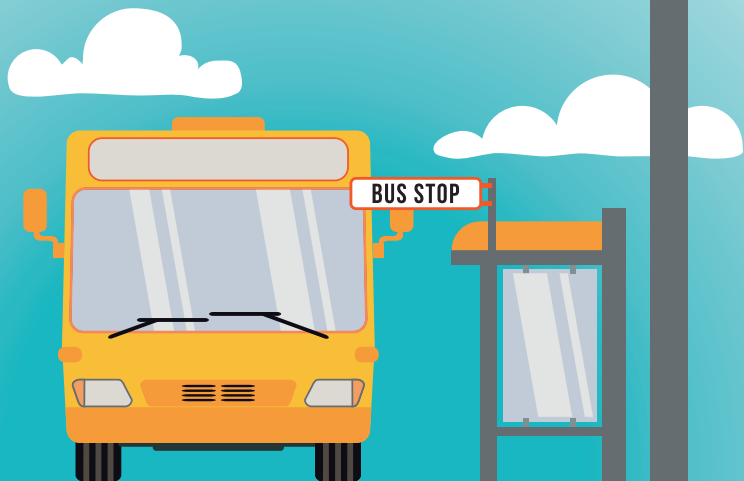




# Ramsey > Somersham > St Ives

**All times from 16 August 2021**



**Ramsey > Somersham > St Ives****21****MONDAY TO FRIDAY**

Ramsey, Great Whyte, opp New Road	09:15	–	15:55
Bury, High Street, opp Owls End	09:19	–	15:59
Warboys, High Street, opp Church Road	09:26	–	16:06
Pidley, Warboys Road, Fen Road	09:30	–	16:10
Pidley, High Street, Warboys Road	09:31	–	16:11
Somersham, High Street, opp Church Street	09:35	–	16:15
Somersham, The Trundle, opp Loftsteads	09:38	12:38	16:18
Somersham, High Street, opp Parkhall Road		12:35	
Colne, High Street, East Street	09:45	12:45	16:25
Earith, Greenfields, opp School Road	09:51	12:51	16:31
Earith, High Street, opp Chapel Lane	09:54	12:54	16:34
Bluntisham, High Street, o/s 23 High Street	10:00	13:00	16:40
Needingworth, High Street, Church Street	10:05	13:05	16:45
St Ives, Morrisons	10:09	13:09	16:49
St Ives, Market Road, Bus Station (Bay 2)	10:15	13:15	16:55

**St Ives > Somersham > Ramsey****MONDAY TO FRIDAY**

St Ives, Market Road, Bus Station (Bay 2)	12:00	14:00	17:00
St Ives, Morrisons	12:05	14:05	17:05
Needingworth, High Street, opp Church Street	12:13	14:13	17:13
Bluntisham, High Street, o/s 26a High Street	12:18	14:18	17:18
Earith, High Street, Chapel Lane	12:23	14:23	17:23
Earith, Greenfields, School Road	12:25	14:25	17:25
Colne, High Street, opp East Street	12:30	14:30	17:30
Somersham, High Street, opp Parkhall Road	12:35	14:35	17:35
Somersham, The Trundle, Loftsteads	12:38	14:38	17:38
Somersham, High Street, opp Parkhall Road	–	14:41	17:41
Pidley, High Street, opp Warboys Road	–	14:45	17:45
Pidley, Warboys Road, opp Fen Road	–	14:46	17:46
Warboys, High Street, Church Road	–	14:50	17:50
Bury, High Street, Owls End	–	14:58	17:58
Ramsey, Great Whyte, opp New Road	–	15:02	18:02

Service operated by Dews Coaches, under contract  
to Cambridgeshire & Peterborough Combined Authority